

# United Way Can Help You Achieve Your COMMUNITY REINVESTMENT ACT GOALS

**2** PREPARE CHILDREN TO SUCCEED

The Community Reinvestment Act (CRA) is one of the many ways banks give back to our community. United Way of Cass-Clay (United Way) makes strategic investments into our community that can help your bank achieve its CRA goals.

We are proud to share more about specific initiatives that specifically address CRA areas of interest.

United Way of Cass-Clay is activating resources to prepare children to succeed here in our local community.

## United Way School Supply Drive



### THE ISSUE

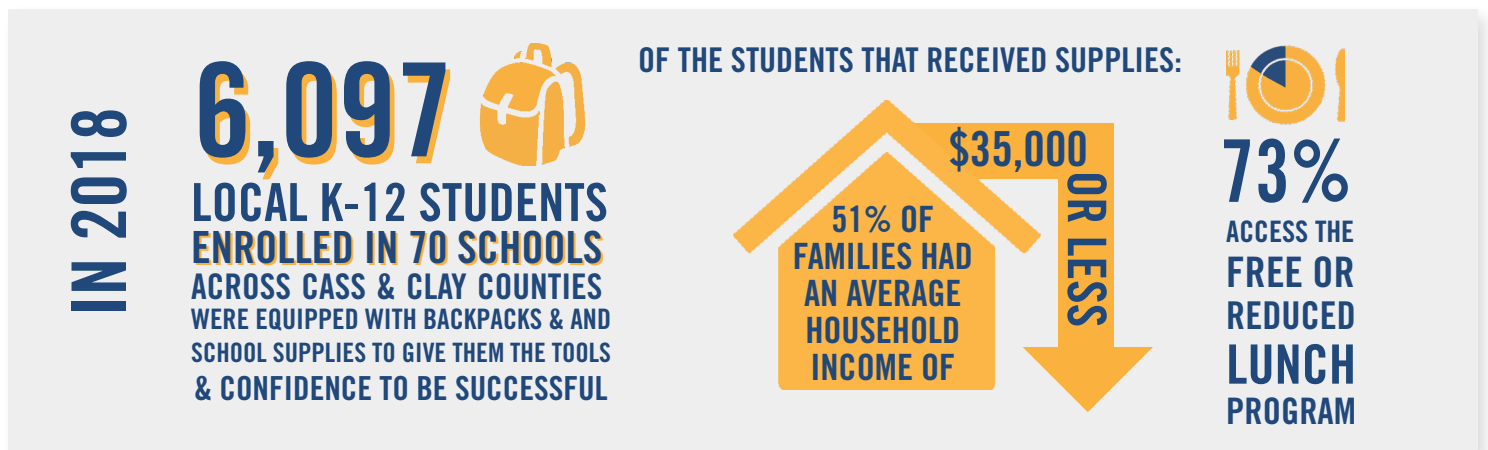
- **1 in 9 people live in poverty** in our community - that's **26,000 people**
- **30% of children** in Cass & Clay Counties qualifies for free or reduced lunch program - that's about **10,575 children**

### THE ACTION

Each summer, United Way coordinates the School Supply Drive to equip thousands of local K-12 students with the backpacks and supplies they need to succeed in school.

2018 marked the 20th year of the annual School Supply Drive, which provides students in need with a new backpack filled with supplies so they can start the school year confident, ready to learn and prepared to succeed.

### THE RESULTS



### How the United Way School Supply Drive Works

- United Way volunteers and investors collect school supplies and monetary donations to prepare and pack backpacks with grade appropriate supplies for students grades K-12.
- These supplies are available for all students attending K-12 schools in Cass or Clay Counties.
- Families complete a short registration form, which includes income, family size, age of children, and eligibility for free or reduced lunch program.
  - Students and families receiving supplies must have a form of ID for each child.

For more information on the United Way School Supply Drive & the national school lunch program visit [www.unitedwaycassclay.org/how-we-help](http://www.unitedwaycassclay.org/how-we-help) or reach out to our team for specific information or data.

For more information, contact:

Christie Lewandoski at United Way of Cass-Clay at [clewandoski@unitedwaycassclay.org](mailto:clewandoski@unitedwaycassclay.org) or 701.237.5050.

